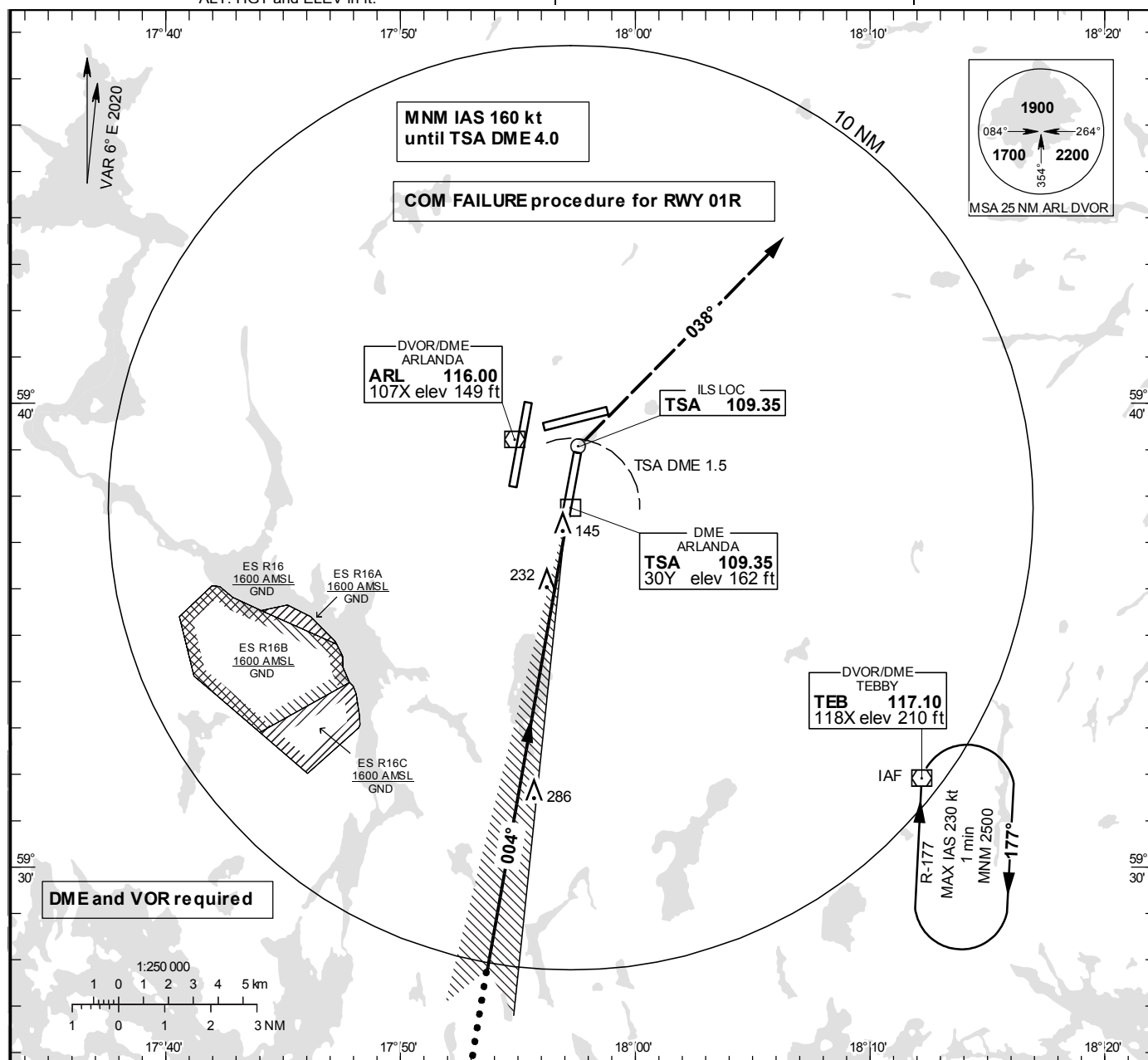


## STOCKHOLM/Arlanda

COM FAILURE PROC  
ILS or LOC RWY 01RINSTRUMENT  
APPROACH  
CHART – ICAO

THR ELEV 138.0 ft, AD ELEV 138 ft  
OCH are related to THR.  
Circling OCH are related to AD ELEV.  
BRG are MAG  
ALT, HGT and ELEV in ft.

ARLANDA TOWER 125.130/  
118.505/128.730  
ARLANDA ATIS ARR 119.005  
STOCKHOLM APPROACH 123.755

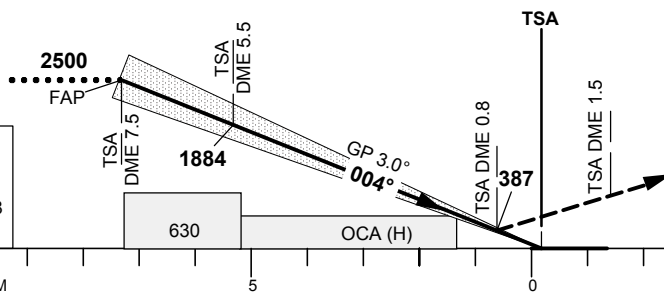


TA 5000 ft AMSL RDH 50.9 ft

\* Timing not authorized for defining the MAPt

OM replaced by TSA DME 5.5  
MM replaced by TSA DME 0.8

LOC  
FAF at TSA DME 7.5  
TSA DME 5.5 1880  
MAPt at TSA DME 0.8  
Descent grad. 5.2%



CLIMB STRAIGHT AHEAD. AT 600  
OR TSA DME 1.5 (PAST TSA DME),  
WHICHEVER IS LATEST, TURN RIGHT  
TO TRACK 038° CLIMBING. AT 2500 OR  
TSA DME 4.0 WHICHEVER IS LATEST,  
TURN RIGHT TO TEB VOR/DME.  
AT TEB INTERCEPT TEB R-222 AND  
PROCEED TO TEB DME 8.2. TURN RIGHT  
TO INTERCEPT LOC TSA, NOT BELOW  
2500 UNTIL FAF/FAF (TSA DME 7.5)

OCA (H)						Final approach	LOC Distance FAF-MAPt 6.7 NM*							
Cat of ACFT		A	B	C	D	DL	DME TSA NM	7	6	5	4	3	2	
Straight-in Approach	Cat I	285 (147)	298 (160)	309 (171)	320 (182)	322 (184)	ALT	2361	2043	1724	1406	1087	769	
	Cat II	193 (55)	219 (81)	233 (95)	244 (106)	245 (107)	GS	kt	80	100	120	140	160	180
	LOC	490 (350)					Time	min:s	5:02	4:02	3:21	2:53	2:31	2:14
	Cat III B Approved						Rate of descent	ft/min	425	530	635	745	850	955

CHANGE: Editorial